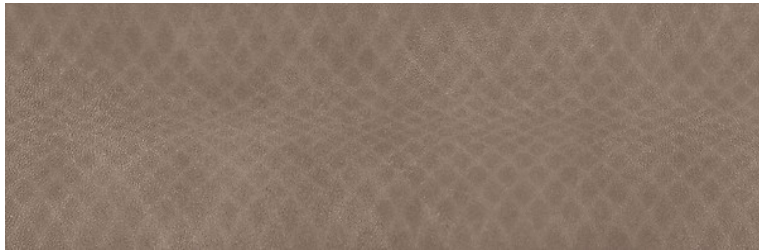


AREGO TOUCH TAUPE STRUCTURE SATIN



DIMENSION: 29 X 89
THE NAME OF THE COLLECTION: AREGO TOUCH
TYPE OF TILE: WALL TILES
PRODUCT CODE: OP1018-010-1
EAN: 5902115771392
INDEX: TWZR1022277854

FEATURES OF TILES

COLOUR: BROWN
TYPE OF SURFACE: STRUCTURE
TILE'S SURFACE FINISH: SATIN
TILE'S SIZE: VERY BIG (FROM 80X80)
STAIN RESISTANCE CLASS: 5
INSPIRATION: CONCRETE
APPLICATION: INSIDE

TECHNICAL DATA

PACKAGING WEIGHT: 23,865 KG
NUMBER OF PIECES IN ONE PACKAGE: 5
NUMBER OF M2 IN ONE PACKAGE: 1,29
WEIGHT OF 1M2 TILES: 18,5 KG
WARRANTY: 6 YEARS
USAGE: WALL
TONALITY: V1
RECTIFIED TILE: YES